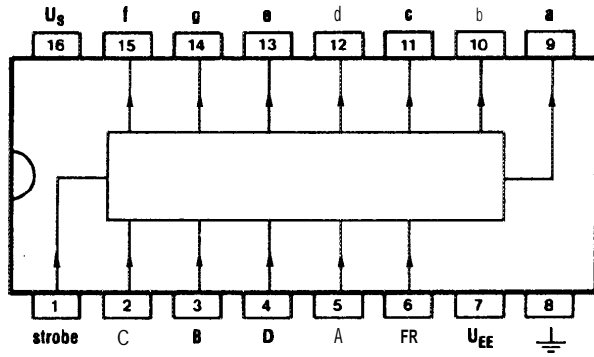


BCD / 7-Segment Dekoder mit Latch
 BCD-to-7 Segment Decoder / Latch
 Décodeur 7 Segments / BCD à loqueteau
 Decodificatore BCD con latch a 7 sezioni
 Decodificador BCD a 7 segmentos con registro latch



D	C	B	A	CHR
L	L	L	L	0
L	L	L	H	1
L	L	H	H	2
L	L	H	L	3
L	H	L	L	4
L	H	L	H	5
L	H	H	L	6
L	H	H	H	7
H	L	L	L	8
H	L	L	H	9
H	L	H	L	L
H	L	H	H	H
H	H	L	L	P
H	H	L	H	A
H	H	H	L	-
H	H	H	H	blank

- 1) Supply voltage = +5/-5 V
- 2) FR = Display frequency, A...D = BCD inputs
- 3) a...g = 7-segment outputs, CHR = Output Character

CMOS 4056			GRENZDATEN			KENNDATEN											
Typ Type Tipo	Hersteller Manufact. Fabricants Produttori Fabricantes	B Sec. 3	T _U		U _{dd}		P _{tot} max	U _{dd}	U _{IH}		I _{dd} typ	t _{TR}			t _{PD}		
			min	max	min	max			U _{NL}	U _{NH}		n _{styp}	(S _{ns}) ↓	(S _{ns}) ↑	n _{styp}	(S _{ns}) ↓	(S _{ns}) ↑
°C	°C	V	V	mW	V	V	V	μA	Pin	↓	↑	Pin	↓	↑			
CD 4056 BD	RCA	6c	-55	155	-0.5	+20	200	1) 10 15	1.5 3 4	3.5 7 11	40n 40n 40n	Q Q Q	100 100 75	100 100 75	E>Q E>Q E>Q	650 575 375	650 575 375
CD 4056 BE	RCA	6a	-25	85	-0.5	+20	200	1) 10 15	1.5 3 4	3.5 7 11	40n 40n 40n	Q Q Q	100 100 75	100 100 75	E>Q E>Q E>Q	650 575 375	650 575 375
CD 4056 BF	RCA	6b	-55	155	-0.5	+20	200	1) 10 15	1.5 3 4	3.5 7 11	40n 40n 40n	Q Q Q	100 100 75	100 100 75	E>Q E>Q E>Q	650 575 375	650 575 375
CD 4056 BH	RCA	ch	-55	155	-0.5	+20		1) 10 15	1.5 3 4	3.5 7 11	40n 40n 40n	Q Q Q	100 100 75	100 100 75	E>Q E>Q E>Q	650 575 375	650 575 375
CD 4056 BK	RCA	16b	-55	155	-0.5	+20		1) 10 15	1.5 3 4	3.5 7 11	40n 40n 40n	Q Q Q	100 100 75	100 100 75	E>Q E>Q E>Q	650 575 375	650 575 375
HCC 4056 BD	SGS	6c	-55	155	-0.5	+20	200	1) 10 15	1.5 3 4	3.5 7 11	40n 40n 40n	Q Q Q	100 100 75	100 100 75	E>Q E>Q E>Q	650 575 375	650 575 375
HCC 4056 BF	SGS	6b	-55	155	-0.5	+20	200	1) 10 15	1.5 3 4	3.5 7 11	40n 40n 40n	Q Q Q	100 100 75	100 100 75	E>Q E>Q E>Q	650 575 375	650 575 375
HCC 4056 BK	SGS	16b	-55	155	-0.5	+20	200	1) 10 15	1.5 3 4	3.5 7 11	40n 40n 40n	Q Q Q	100 100 75	100 100 75	E>Q E>Q E>Q	650 575 375	650 575 375
HCF 4056 BE	SGS	6a	-25	85	-0.5	+20	200	1) 10 15	1.5 3 4	3.5 7 11	40n 40n 40n	Q Q Q	100 100 75	100 100 75	E>Q E>Q E>Q	650 575 375	650 575 375
HCF 4056 BF	SGS	6b	-25	85	-0.5	+20	200	1) 10 15	1.5 3 4	3.5 7 11	40n 40n 40n	Q Q Q	100 100 75	100 100 75	E>Q E>Q E>Q	650 575 375	650 575 375